

*GRANTA MI™ version 11*

# **GRANTA MI Help & Documentation**

GRANTA MI™ is the leading system for materials information management in engineering organizations. It enables you to control, analyze, and securely share critical corporate data on materials and processes, managing the materials information lifecycle.

[www.grantadesign.com](http://www.grantadesign.com)

© Granta Design 2018 All rights reserved

CES Selector and GRANTA MI are trademarks of Granta Design Ltd. For other Granta product trademarks, see [www.grantadesign.com/smallprint.htm](http://www.grantadesign.com/smallprint.htm)

Adobe®, Adobe® PDF, and Acrobat® are either registered trademarks or trademarks of Adobe Systems Incorporated in the United States and/or other countries.

Microsoft®, Excel®, PowerPoint®, Internet Explorer®, SQL Server®, Windows®, and Windows Server® are registered trademarks of Microsoft Corporation or its subsidiaries in the United States or other countries.

Granta Design Ltd. makes reasonable efforts to explicitly acknowledge all trademarks cited in our literature or on our website. If you would like us to add or alter an acknowledgement, please [contact us](#).

Release notes, documentation, and Knowledge Articles for the current and all previous GRANTA MI releases are all available on the Granta Support website. Go to [www.grantadesign.com](http://www.grantadesign.com) and click SIGN IN to log into your My Granta page, then click on **Documentation**.

We welcome your feedback on this document. Please let us know if anything is unclear, if you spot an error, or have an idea for new content, by emailing [docs@grantadesign.com](mailto:docs@grantadesign.com).

Document version: MI11/02  
Published: September 2018

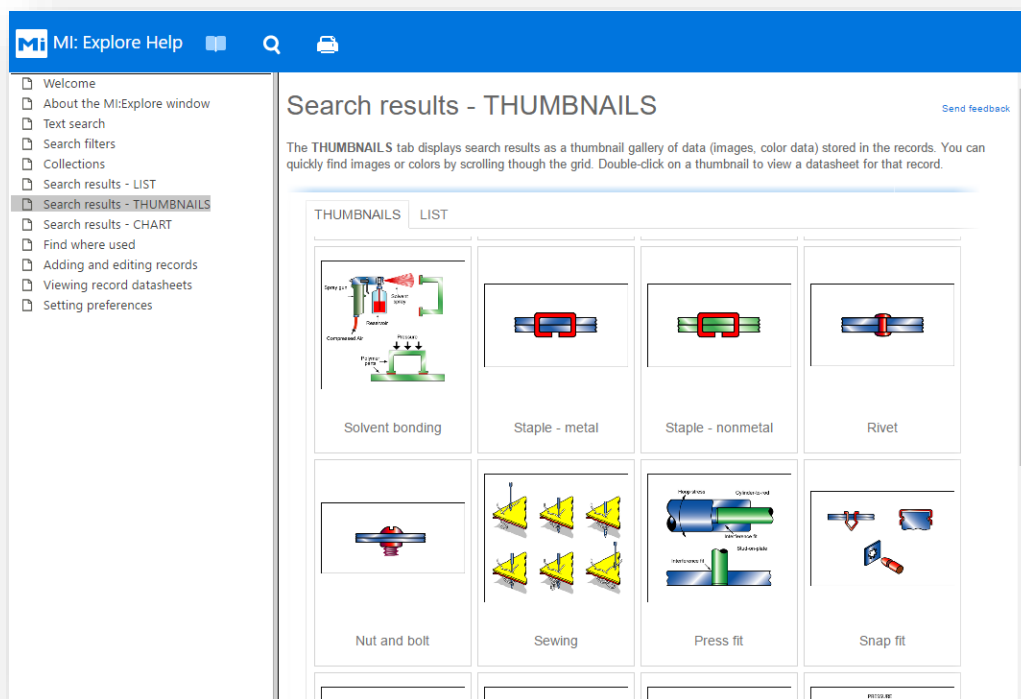
## Contents

1	User assistance for GRANTA MI .....	4
2	Application Help .....	5
3	GRANTA MI Reference Documentation .....	6
3.1	How do I find the documentation? .....	6
3.2	What documents are available? .....	7

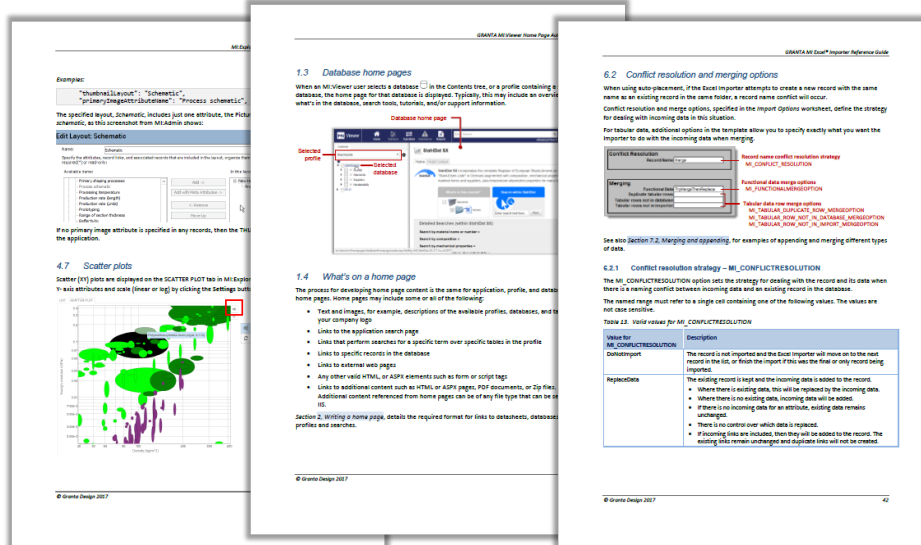
# 1 User assistance for GRANTA MI

User assistance for GRANTA MI is delivered in two forms:

- **Help** – aimed at application end users, delivering information on how to use the application when and where users need it. This can be accessed from the application's Help menu.



- **Reference Documentation (PDFs)** – reference documentation aimed at IT Administrators, Granta System Admins, Granta Database Administrators, people importing/exporting data and/or maintaining importer and exporter templates.



## 2 Application Help

GRANTA MI client applications have HTML-based help, accessed from the Help menu:

- MI:Admin
- MI:Server Manager
- MI:Server Connection tool
- MI:Viewer Configuration tool
- MI:Service Layer Configuration tool
- MI:Toolbox

*embedded 'HTML Help' (CHM) installed with the software on the client PC*

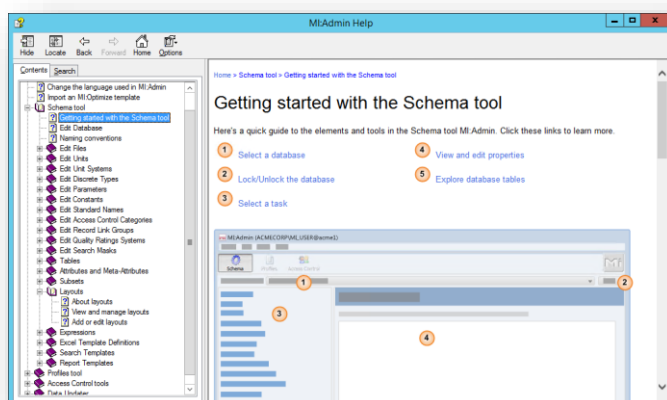
- MI:Remote Import
- MI:Viewer

*HTML-based Help installed on the application server alongside the product software*

- MI:Explore
- MI:Workflow Manager
- User Manager

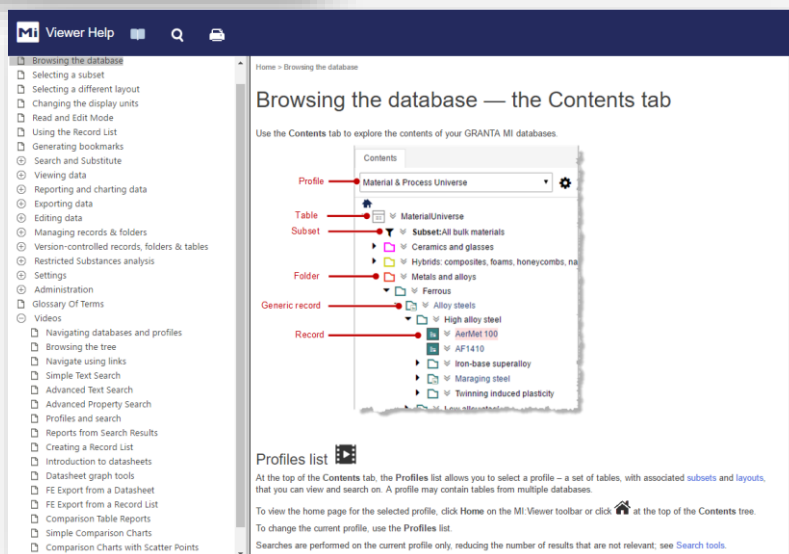
*Online help hosted on support.grantadesign.com*

The Help system includes help topics on how to use the different features of the application, and search and navigation tools help users to find the information they need quickly and get back on task.



*Help system for the MI:Admin application*

*Help system for MI:Viewer*



### 3 GRANTA MI Reference Documentation

Reference documentation for GRANTA MI provides information on system installation, configuration, and administration for IT Admins, Granta System Admins and Database Admins, customizers, and people importing/exporting data and/or writing importer and exporter templates. Granta reference documentation is supplied in Adobe® PDF format.

#### 3.1 How do I find the documentation?

You can view the reference documentation for GRANTA MI from the following locations.

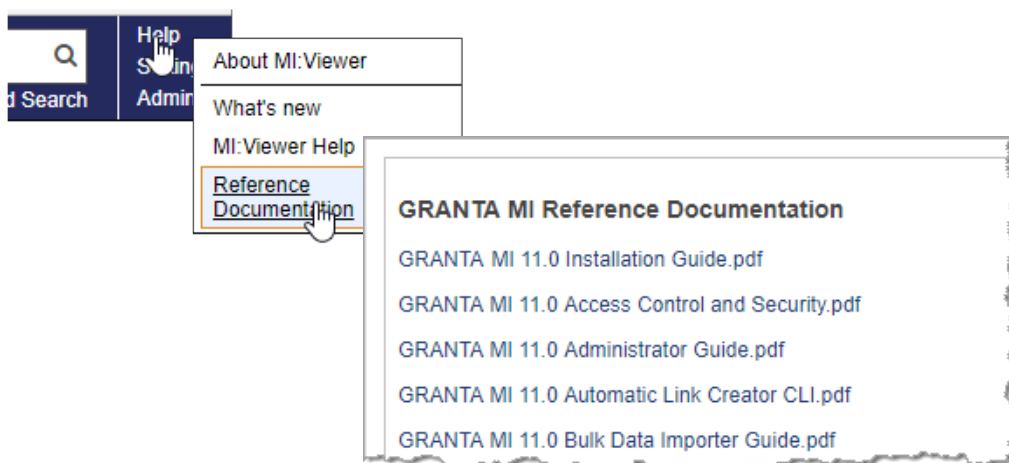
##### 3.1.1 On the MI:Server or MI:Toolbox host

The GRANTA MI PDF documentation is installed in the MI:Server and MI:Toolbox host servers during product installation.

- On the MI:Server host, by default the documentation will be located in a *Documentation* subfolder in the MI:Server installation folder, typically:  
*C:\Program Files\Granta\GRANTA MI\Server\Documentation*
- For MI:Toolbox, the relevant PDF documentation is installed in a *Documentation* subfolder within the plugin installation folder on the Toolbox server.

##### 3.1.2 In MI:Viewer

The GRANTA MI PDF documentation can be accessed in MI:Viewer from the **Help** menu: click **Help > Reference Documentation** and then click on a document to download the PDF file.



### 3.1.3 On the Granta Support website

Reference documentation for GRANTA MI is available on [My Granta](#), the online portal providing support and resources to Granta customers.

Sign in to your My Granta account to access release notes, reference documentation, and training videos.

## 3.2 What documents are available?

Table 1. Core documentation for GRANTA MI

	Documentation
IT SYSTEM ADMINISTRATION	<b>GRANTA MI Release Notes</b> Provides an overview of major changes and enhancements in each release, with information about any issues that may require attention when upgrading from earlier releases.
	<b>GRANTA MI System Requirements</b> A standalone document that includes information on the hardware and third-party software requirements for GRANTA MI. You can get hold of the latest version of this document on the Granta website, or from Granta Technical Support.
	<b>GRANTA MI Installation Guide</b> Takes you through a complete installation of the GRANTA MI software components. It covers installing and updating GRANTA MI software components and reference databases.
	<b>GRANTA MI Configuration Guide</b> Information on configuring GRANTA MI for User Manager authentication and/or authorization, and also for use of custom authenticators. Also covered are recommended IIS settings for the Service Layer.
	<b>MI:Explore Configuration Guide</b> In-depth information about how to create different MI:Explore configurations that allow users to see different data and different application features.
	<b>MI:Workflow Installation and Configuration Guide</b> System requirements, installation and configuration, and troubleshooting information for the MI:Workflow application.
GRANTA MI SYSTEM & DATA ADMINISTRATION	<b>GRANTA MI Administrator's Guide</b> Detailed information on the administration and management of the GRANTA MI components and databases during normal operation of a standard configuration.
	<b>GRANTA MI Access Control and Security Guide</b> Describes how system and database security for GRANTA MI are implemented, and covers how to configure access control schemas on GRANTA MI databases for permission-based or attribute based access control.
	<b>GRANTA MI Record Version Control Guide</b> Describes how version control is implemented in GRANTA MI, allowing changes to a record and its data to be tracked.

	Documentation
	<b>CAE Exporters for Granta Reference Data</b> Details the CAE exporters available for each of the Granta reference data modules and summarises what type of data can be exported using each.
	<b>MI:Workflow Designer Guide</b> Designing and implementing GRANTA MI workflows using the MI:Workflow Designer tool.
CUSTOMIZATION	<b>GRANTA MI:Optimize Guide</b> Describes the MI:Optimize tool and how to tune it to your company's "business rules"; details how to implement the MI:Optimize wizard functionality in GRANTA MI:Viewer.
	<b>GRANTA MI:Viewer Home Page Author Guide</b> Describes how to construct customized application, profile, and database home pages for MI:Viewer users.
IMPORTING DATA	<b>GRANTA MI Excel Importer Reference Guide</b> Describes the required structure and format of the Microsoft Excel workbooks used by the MI:Toolbox Excel Importer to import data into a GRANTA MI database. Also covers how to run the Excel Importer from the command line (CLI).
	<b>GRANTA MI Text Importer Reference Guide</b> Describes the required structure and format of the template files used by the MI:Toolbox Text Importer to import data from text files into a GRANTA MI database. Also covers how to run the Text Importer from the command line (CLI).
	<b>GRANTA MI:Toolbox Bulk Data Importer</b> Describes how to run the Bulk Data Importer command-line tool for batch importing data from text or Excel files into a GRANTA MI database.
EXPORTING DATA	<b>GRANTA MI FEA Exporter Author Guide</b> Describes the required structure and format for exporter files that can be used to output data from a GRANTA MI database in a neutral XML format, for subsequent analysis in a Finite Element Analysis (FEA) package.
	<b>GRANTA MI Excel Exporter Reference Guide</b> Describes the required structure and format of Microsoft Excel template workbooks used to export data from a GRANTA MI database to Excel.
TRANSFORMING DATA	<b>GRANTA MI Automatic Link Creator CLI</b> Describes how to use the Automatic Link Creator, a command-line tool for creating static record links within a GRANTA MI database.
	<b>GRANTA MI Tabular Roll-up Module CLI</b> Describes how to use the Tabular Roll-up Module, a command-line tool for converting the data in a specified column of a tabular attribute to a single value using a roll-up rule, using this value to populate another attribute within the same record.



Table 2. MI:SDK documentation

Documentation and Help	
API DOCUMENTATION	<p><b>GRANTA MI Public API Overview</b> Overview of MI application structure and objects (tables, attributes, records, data, units, links, subsets, layouts, etc.)</p> <p><b>GRANTA MI Server API Getting Started</b> .NET Framework and Visual Studio requirements for GRANTA MI application developers.</p> <p><b>GRANTA MI Server API Writing a Custom Authenticator</b> Information on implementing custom authentication for MI:Server and MI:Viewer based on the IAuthenticator interface.</p> <p><b>GRANTA MI Service Layer API Guide</b> Granta MI Service Layer is an application that exposes an Application Programming Interface (API) for interacting with GRANTA MI, allowing access by clients written in many languages, including C#, VB, C, C++, Java and Python. This document includes information on the Service Layer interface, versions, hosting options, WCF configuration, integration with MI:Server, and the custom reports API.</p> <p><b>GRANTA MI Service Layer SDK Developer Guide</b> Describes the Software Development Kit (SDK) for the Service Layer; explains how to build the software examples included in the SDK; suggests how to use the SDK as a basis for development of client applications and Custom Reports.</p> <p><b>GRANTA MI Service Layer SDK Revisions</b> Describes the most important changes between releases of the Service Layer SDK.</p> <p><b>GRANTA MI Service Layer User Competencies</b> Identifies the prerequisite skills and knowledge required for developing applications with the Service Layer SDK.</p>
MI:SCRIPTING TOOLKIT	<p><b>MI:Scripting Toolkit (v1.3)</b> Installation of the version 1.3 Scripting Toolkit for Python and MATLAB; overview of Scripting Toolkit services; class reference.</p> <p><b>MI:Scripting Toolkit for Python (v1.4)</b> Installation of the v1.4 Scripting Toolkit for Python; overview of Scripting Toolkit services; class reference.</p> <p><b>MI:Scripting Toolkit for Python online help</b> Detailed online help covering the Services and classes provided with the MI:Scripting Toolkit for Python. Includes example scripts and downloadable interactive Python notebooks.</p>